

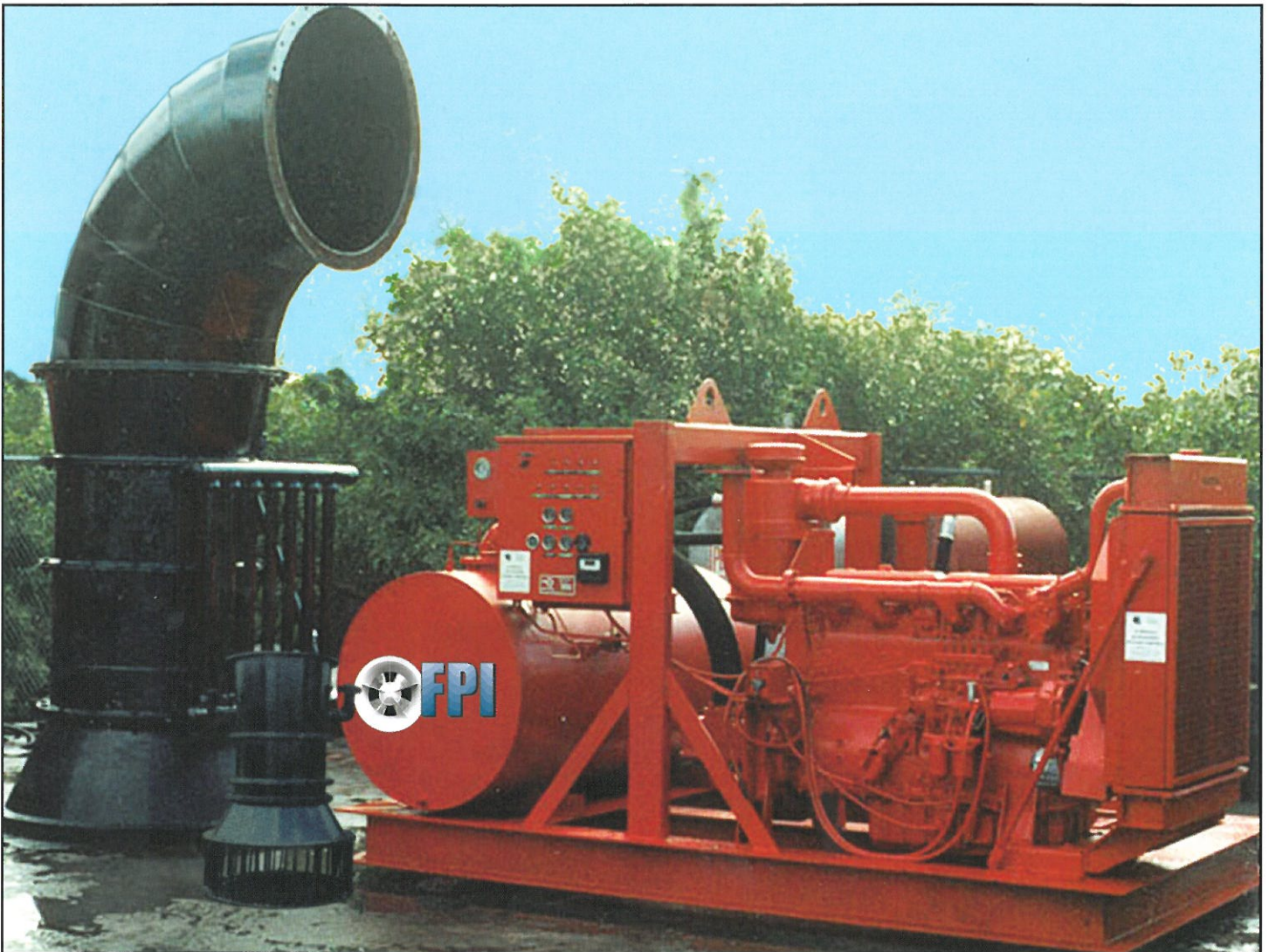
FPI

Propeller Pumps Since 1937

- Flood Control
- Construction
- Agriculture
- Municipal
- Aquaculture

PORTABLE AXIAL FLOW PUMPS

8 To 72 Inch Diameter Pumps, Hydraulically Driven



FOR HIGH VOLUME PUMPING AT LOW TO MEDIUM HEADS

*FPI has been producing axial flow pumps
of unsurpassed workmanship for more than six decades*

Member of
Hydraulic
INSTITUTE



I.S.O. 9001
CERTIFIED

FPI PORTABLE PUMPS

Our Portable Axial Flow Pumps share the same highly efficient four bladed propeller and top quality component material of the industry standard FPI Line Shaft Pumps. Portable axial flow pumps are hydraulically driven and offer advantages over conventional pumps, the foremost being the lack of civil works needed for installation, and ability to position the pump head far from the power unit. Initial installation and any subsequent movements are then quick and inexpensive.

The axial flow pump head is driven by a hydraulic power unit made with the most durable and efficient components available. The hydraulic pump is driven from a diesel, electric motor, or combination drive source. The power unit can be either trailer or skid mounted together with the hydraulic control valve system, oil reservoir, hydraulic oil filter and high capacity fuel tank.



275 HP PORTABLE HYDRAULIC POWER UNITS WITH 30" DIA. HYDRAULIC PUMPS AND PIPING READY FOR SHIPMENT

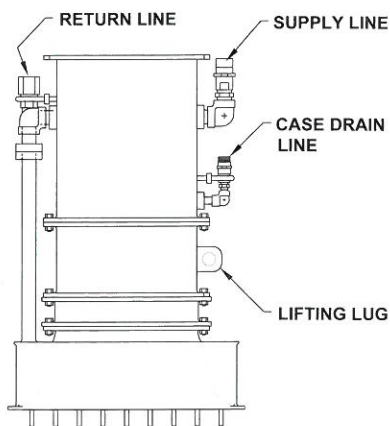


FIGURE (1) OUTLINE DRAWING

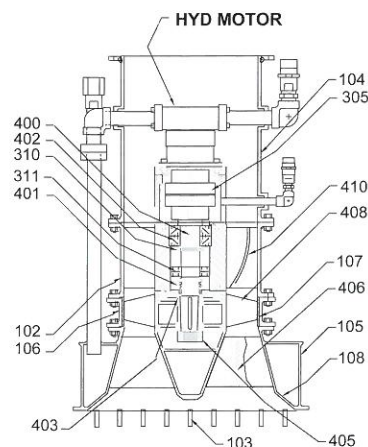


FIGURE (2) CROSS SECTION DRAWING

- 102 DISCHARGE BOWL
- 103 BAR SCREEN (OPTIONAL)
- 104 ASSEMBLY HOUSING
- 105 HYD. COOLER (OPTIONAL)
- 106 IMPELLER RING
- 107 IMPELLER RING LINER
- 108 SUTION BELL
- 305 FLEXIBLE COUPLING
- 310 BEARING LOCK NUT
- 311 GUIDE BEARING
- 400 PUMP SHAFT
- 401 MECHANICAL SEAL
- 402 THRUST BEARING
- 403 SAND RESTRICTOR RING
- 405 IMPELLER LOCK NUT
- 406 GUIDE VANE
- 408 IMPELLER
- 410 DIFFUSER VANE



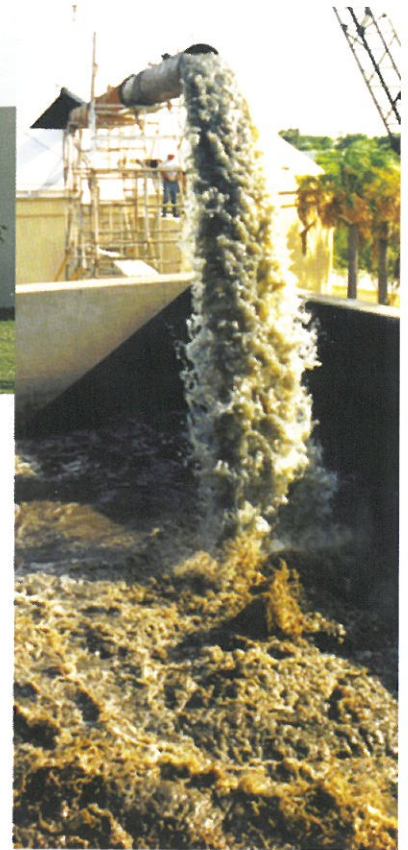
*AXIAL FLOW
HYDRAULIC PUMP HEAD*

*PUMP HEAD CROSS SECTION
MAJOR COMPONENT DESCRIPTION*



**EMERGENCY RAW SEWAGE
TRANSFER APPLICATION**

20 Inch 12000 GPM Portable Axial Flow Pump used to transfer raw sewage from holding tank after plant failure. pumping system remained on line 24 hours a day for over a week while repairs were completed.



Three FPI Portable Axial Flow Pumps used in lake construction for a large housing project. the water is lifted in two stages due to the high head and to allow settling of the water before being pumped off site.

**LAKE CONSTRUCTION
AND DEWATERING
OPERATION**



FPI PUMPS

FPI Hydraulic and Direct Driven Pumps are custom designed and built to your specifications. These pumps are engineered to handle large volumes at maximum efficiency to assure you of the lowest operation cost. The construction is extra heavy to provide reliable service even under the toughest kind of pumping conditions.

65 YEARS OF EXPERIENCE

Serving Agriculture, Industry and Municipalities since 1937. The design of our Portable Submersible Pumps is the result of more than half a century of specialized experience in the pump industry. To insure the quality and performance our customers expect and get, FPI pumps are engineered and built to order.

TEST FACILITIES

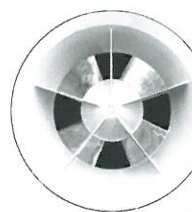
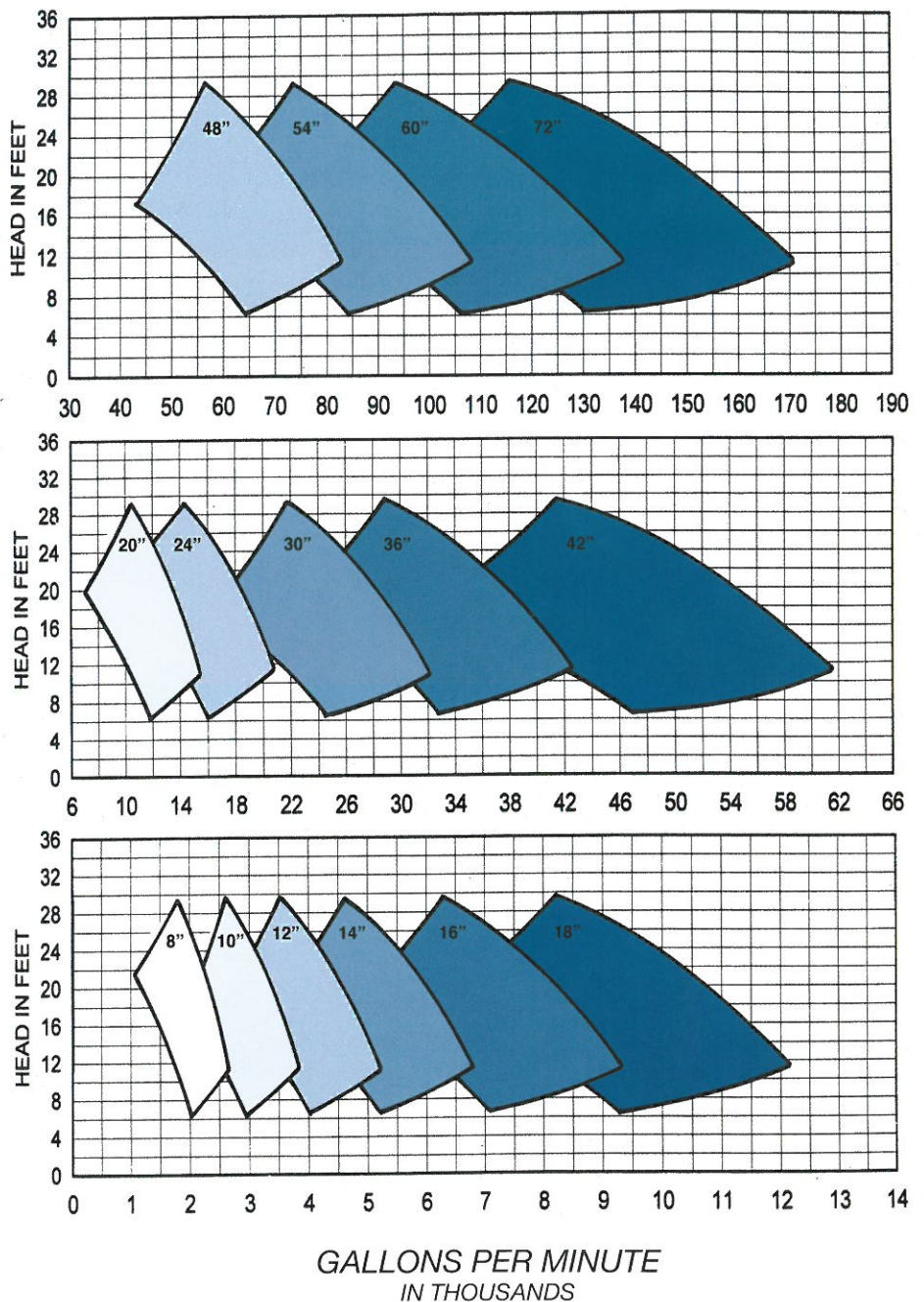
State of the art facilities capable of testing at capacities up to 60000 gpm. Larger pumps are model tested per the Hydraulic Institute standards.

TYPICAL APPLICATIONS

- FLOOD CONTROL
- IRRIGATION
- DRAINAGE
- AGRICULTURE
- AQUACULTURE
- CONSTRUCTION DEWATERING

CURVES SHOW APPROXIMATELY THE CHARACTERISTICS WHEN PUMPING CLEAR COLD WATER

AXIAL FLOW PUMP RANGE CHARTS



FPI

Propeller Pumps Since 1937

814 HAMMONDVILLE ROAD, POMPANO BEACH FLORIDA 33060

PHONE: (954) 946-3066 • FAX: (954) 946-3111

E-MAIL: sales@fpipumps.com

WEBSITE: www.fpipumps.com